



# KN DESIGN

STUDIO

Designing Luxury, Defining spaces

# 01

## ABOUT KN DESIGN STUDIO

Designing Luxury, Defining spaces

Design Studio was founded 5 years ago by Tina Shah with a vision to create thoughtful, functional, and aesthetically refined spaces.

We specialize in residential and commercial interiors, bungalow design, building exteriors, 3D modeling, and architectural walkthroughs. Our services include turnkey project execution as well as professional design consultancy, ensuring a seamless journey from concept to completion.

KN Design Studio, our dedicated team manages project planning, supervision, and coordination, while our execution experts bring every design to life with precision and quality. We believe every space should reflect personality, purpose, and timeless design.



**Building exterior**

**Residential projects**

**We deal into**

**Commercial projects**

**Bungalows**

**we focus on:**

**1**

**innovative  
designs**

**2**

**functional  
planning**

**3**

**smart space  
utilization**

**4**

**quality  
execution**

**5**

**client -  
centric  
approach**

02

**RESIDENTIAL  
PROJECTS**



# 02

## Modern Minimal 1 BHK | 400 Sq Ft Residence(MALAD)

### Project Description

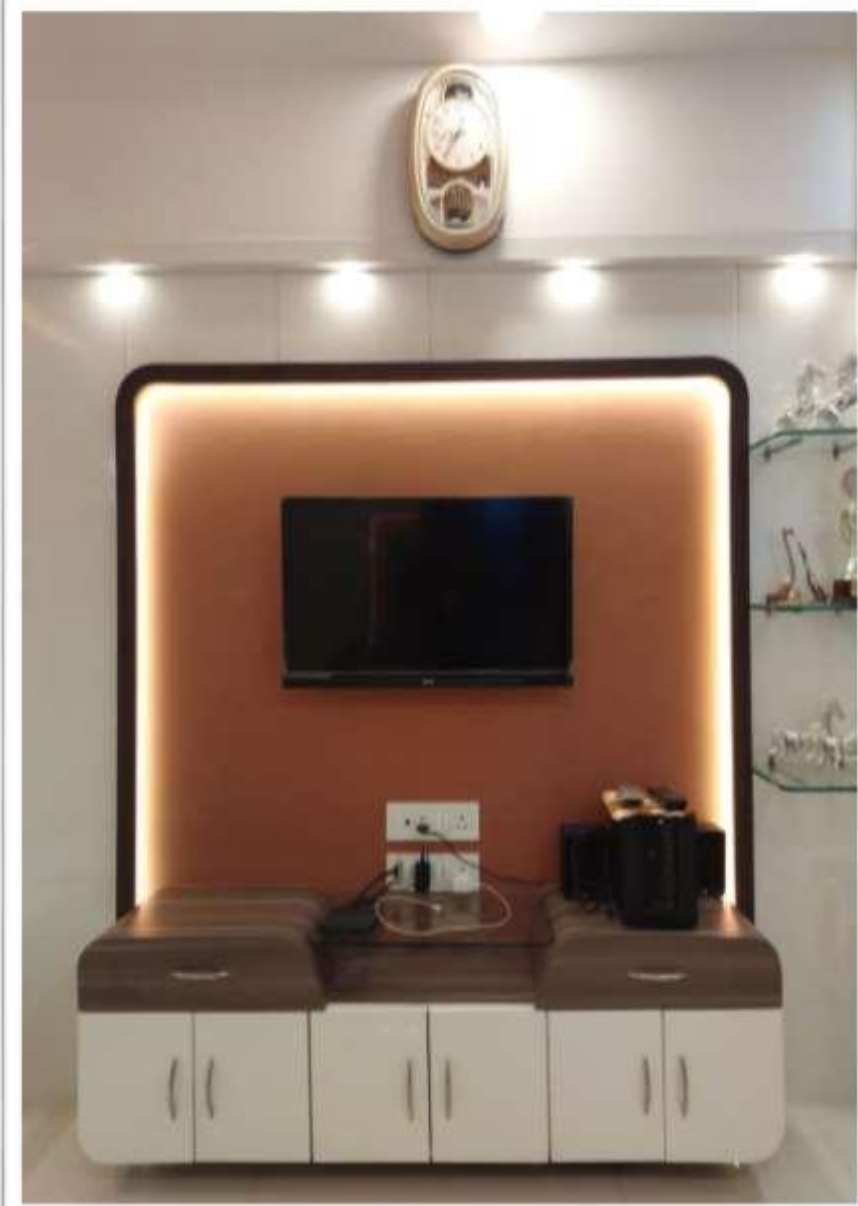
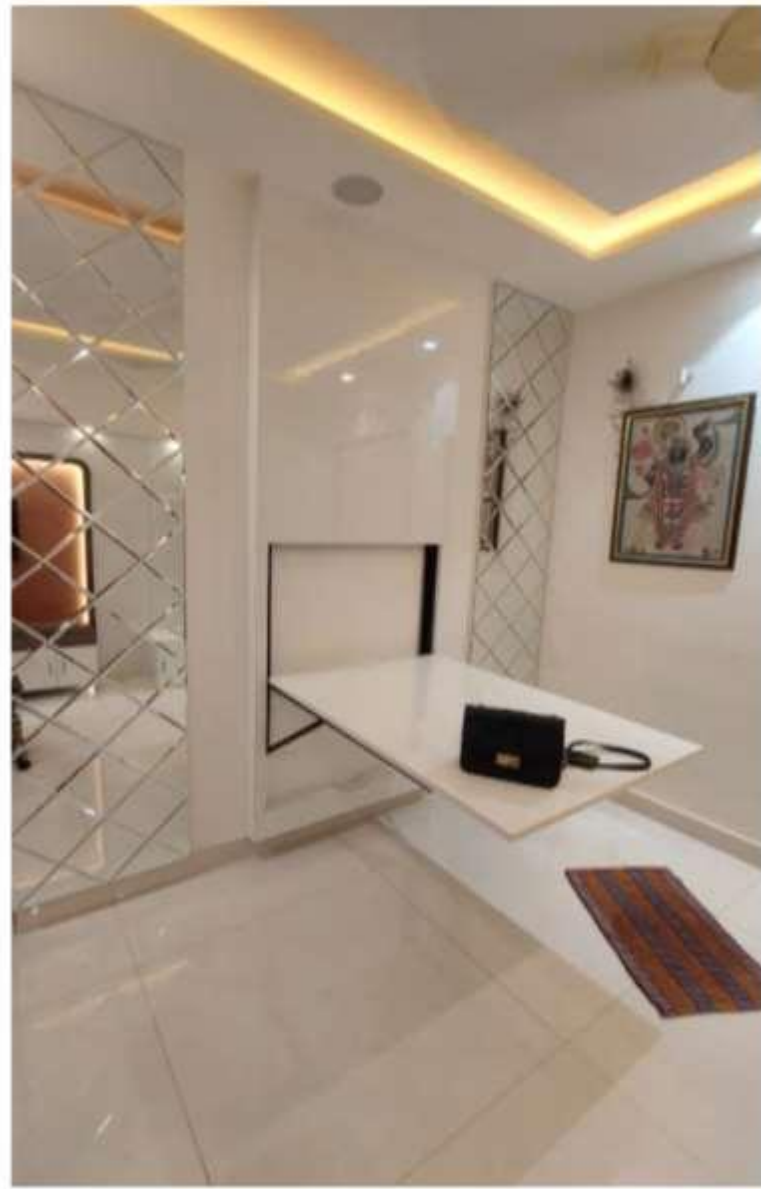
This 400 sq ft 1 BHK residence designed by KN Design Studio reflects a perfect blend of smart planning and modern minimal aesthetics. The design approach focused on maximizing functionality while maintaining a clean and visually spacious environment. Neutral tones, customized furniture, and efficient storage solutions were thoughtfully incorporated to enhance usability within the compact layout. Each space—from the living area to the bedroom and kitchen—was carefully planned to ensure comfort, practicality, and visual harmony. Subtle lighting and refined finishes add warmth and sophistication, creating a well-balanced and elegant home.

Project Highlights • Smart space planning for a 400 sq ft layout

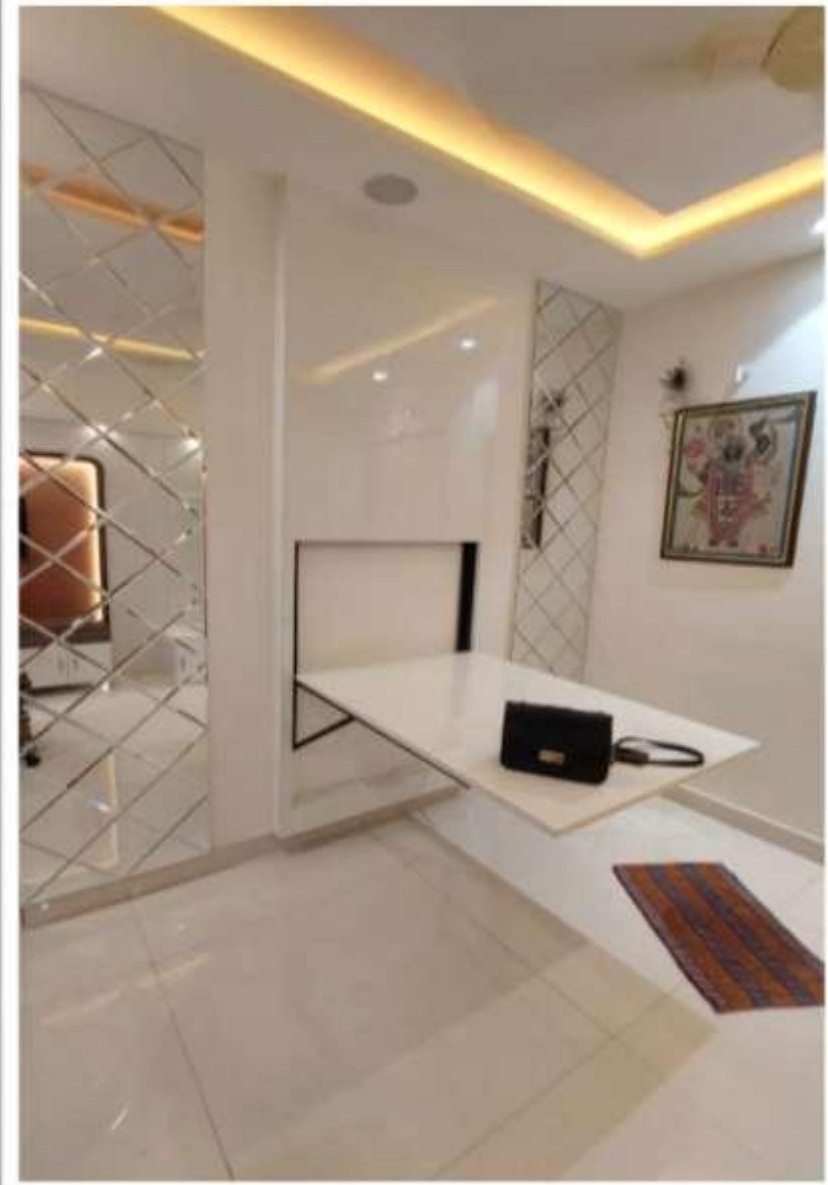
- \* Customized storage solutions
- \* Modern minimal design concept
- \* Functional yet elegant living spaces
- \* Balanced lighting and material palette

### Closing Tagline:

Thoughtfully designed spaces that bring comfort, function, and style together.



**Malad west 1bhk (400sqft)**



# 02

## Contemporary 2 BHK Residence | Bangalore

### Project Description

This elegant 2 BHK residence in Bangalore, designed by KN Design Studio, reflects a perfect balance of contemporary aesthetics and functional planning. The design approach focused on creating well-defined yet connected spaces that enhance comfort and everyday living. A sophisticated palette of materials, subtle textures, and modern finishes was used to elevate the interiors while maintaining a warm and inviting atmosphere. Customized furniture, smart storage solutions, and carefully curated lighting add depth and practicality to the space. Each area of the home—from the living room to the bedrooms—was thoughtfully designed to create a refined, harmonious, and timeless living environment.

### Project Highlights • Contemporary interior design concept

- \* Customized furniture and storage planning
- \* Elegant material and color palette
- \* Smart lighting and spatial planning
- \* Comfortable yet sophisticated living spaces

### Closing Line

Designed to reflect modern living with timeless elegance. Modern Minimal  
2 BHK | 890 Sq Ft Residence(BANGALORE)



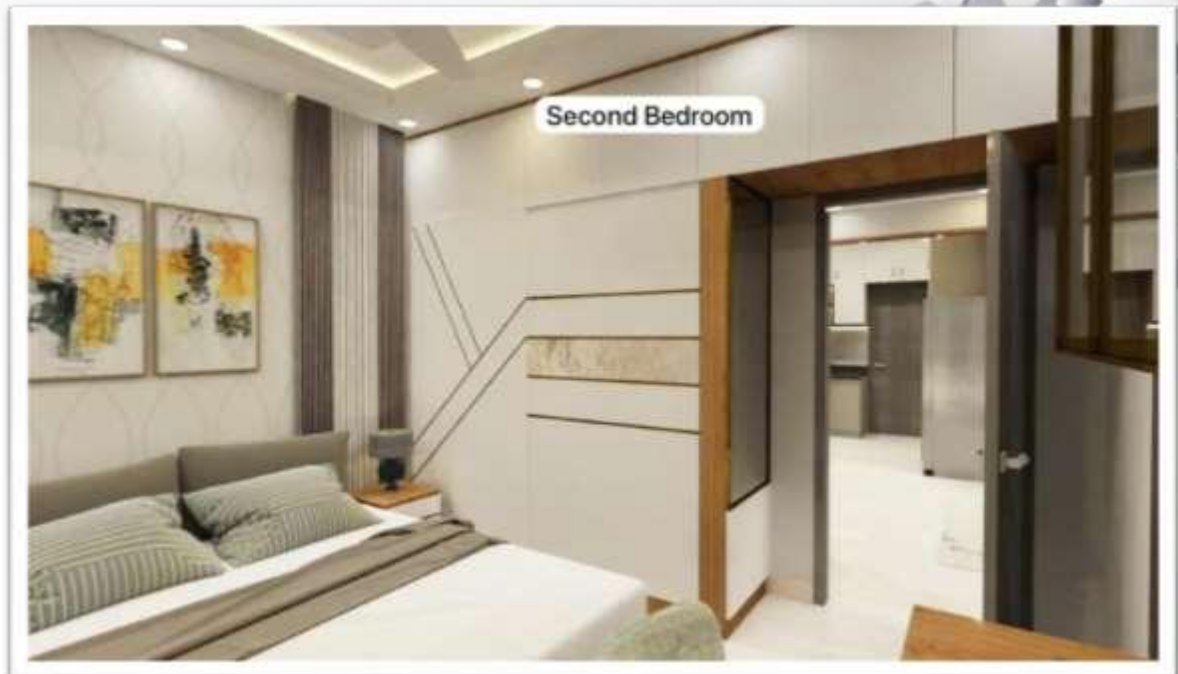
**Kitchen design:**

**Bangalore 2bhk**

Kitchen design:



Dining



Second Bedroom



Living room



Master bedroom

# Modern Luxury 4 BHK Residence | 3250 Sq Ft | Goregaon

02

## Project Description

This 3250 sq ft 4 BHK residence in Goregaon, designed by KN Design Studio, embodies the essence of modern luxury living. The design approach focused on creating a refined and sophisticated environment through clean lines, elegant materials, and a balanced palette. Spacious interiors were enhanced with customized furniture, statement elements, and carefully layered lighting to create depth and visual interest. Premium finishes, subtle textures, and thoughtfully planned layouts ensure both comfort and functionality while maintaining a luxurious aesthetic. The result is a contemporary home that reflects timeless elegance and elevated urban living.

## Project Highlights

- \* Modern luxury interior concept
- \* 3250 sq ft spacious 4 BHK layout
- \* Customized furniture and bespoke details
- \* Premium materials and elegant finishes
- \* Sophisticated lighting and spatial planning

## Closing Line

Where modern design meets luxurious living.



**Goregoan jp deck tower (4bhlk)**





**Goregoan jp deck tower (4bhlk)**

# 03-BUNGALOW PROJECTS

## **Project Description**

This beautifully designed modern luxury bungalow by KN Design Studio reflects a perfect blend of spacious planning, refined aesthetics, and functional design. The project was conceptualized to create a sophisticated living environment that balances luxury with comfort. Thoughtfully designed interiors feature premium materials, elegant textures, and a harmonious color palette that enhances the overall character of the home. Each space—from the grand living area to the private bedrooms—was carefully planned with customized furniture, smart storage solutions, and layered lighting to elevate both functionality and style. The design creates a timeless, elegant residence that complements contemporary lifestyle living.

## **Project Highlights**

- \* Modern luxury bungalow design
- \* Spacious and well-defined interiors
- \* Customized furniture and storage solutions
- \* Premium materials and finishes
- \* Elegant lighting and detailed planning

## **Closing Line**

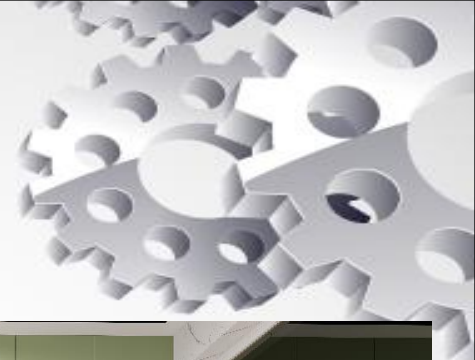
Designing timeless spaces that redefine luxury living.

# **BUNGALOW PROJECTS ABOVE 50 LAKHS (MURBAD)**











मातृशेखर







सातश्रेणी





# 04- Gaushala(11000sqft)

## *Gaushala with Garden & Mandir | 11,000 Sq Ft*

### Project Description

This thoughtfully planned 11,000 sq ft Gaushala project by KN Design Studio was designed to create a functional and serene environment that blends practicality with spiritual and natural elements.

The layout focuses on efficient cattle shelter planning with proper ventilation, natural light, and hygienic circulation spaces to ensure comfort and ease of maintenance. In addition to the Gaushala structure, the project incorporates a peaceful garden space that enhances the natural surroundings and creates a calming atmosphere. A beautifully planned mandir area adds a spiritual focal point to the site, reflecting traditional values while maintaining a harmonious design flow. The overall planning ensures a balanced integration of utility, nature, and devotion.

### Project Highlights

- \* 11,000 sq ft well-planned Gaushala layout
- \* Dedicated garden space for a natural environment
- \* Peaceful mandir area within the premises
- \* Proper ventilation and natural lighting
- \* Functional and hygienic cattle shelter design

### Closing Line

Thoughtfully designed spaces that combine functionality, nature, and spirituality.









# 05- Building exterior design

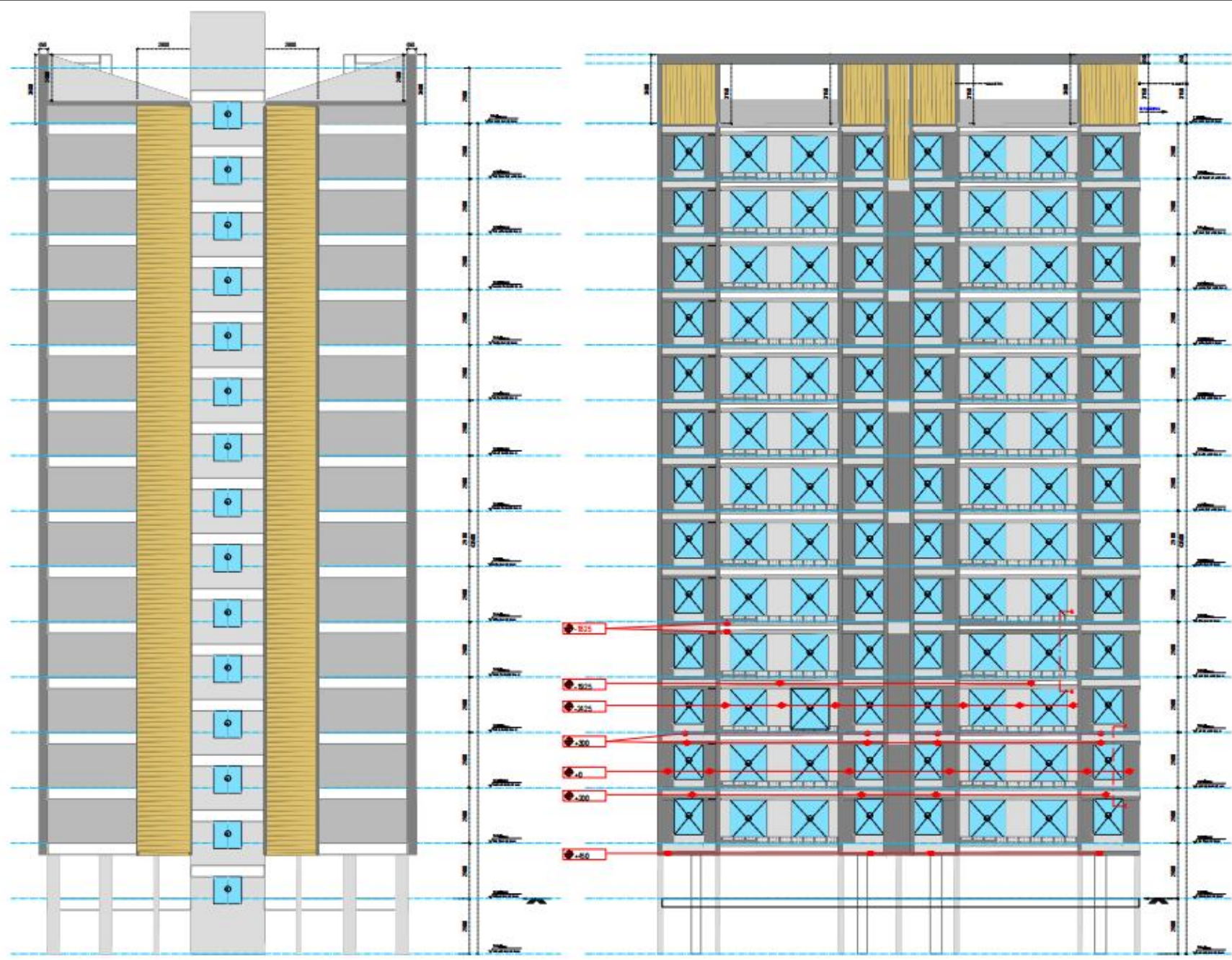
## *Building Exterior Design – KN Design Studio*

At KN Design Studio, we believe the exterior of a building is the first impression of its identity. This project focused on creating a modern and visually striking façade that blends aesthetics with functionality. Our design approach emphasized clean architectural lines, balanced proportions, and thoughtful material selection to enhance the overall character of the structure.

The façade incorporates contemporary elements, durable exterior finishes, and well-planned lighting to highlight architectural features both during the day and night. Special attention was given to elevation detailing, texture combinations, and color harmony to ensure a timeless yet modern look.

Through innovative planning and precise execution, the exterior design not only enhances the building's visual appeal but also contributes to long-term durability and low maintenance. The result is a refined architectural statement that reflects the design philosophy of innovation, functionality, and elegance..





SIDE ELEVATION

FRONT ELEVATION





FRONT ELEVATION





**KN Design**

**Studio**

**THANKS!**